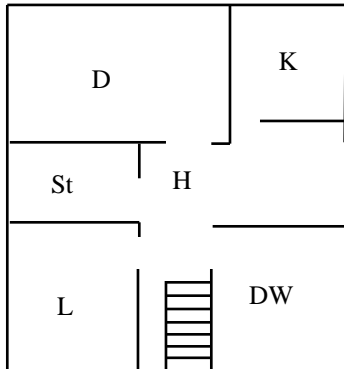
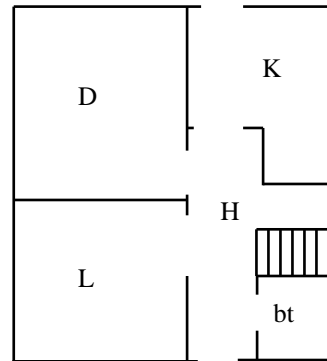


Ground floor plans of 28 typical dwelling types in Great Britain

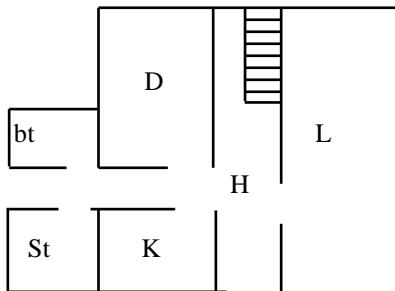
Pre-1919 detached (111)
ceiling height 4 m
approximate area 157 m²



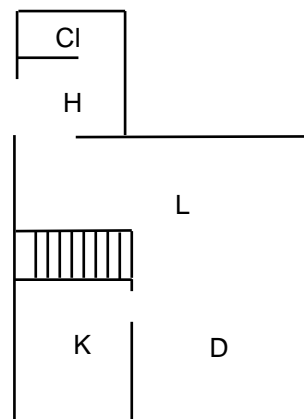
1919-1944 detached (112)
ceiling height 2.5 m
approximate area 54m²



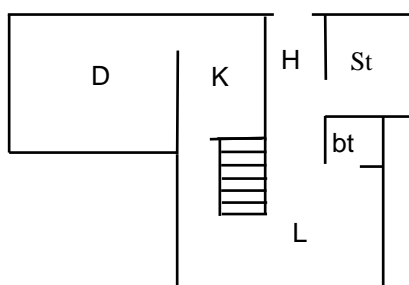
1945-1964 detached (113)
ceiling height 2.4 m
approximate area 83 m²



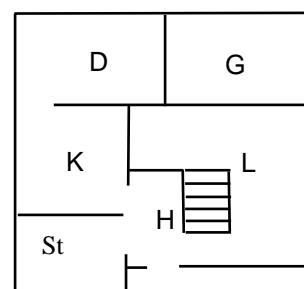
1965-1974 detached (114)
ceiling height 2.4 m
approximate area 62 m²



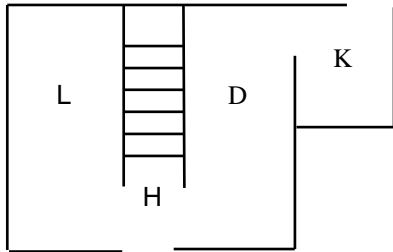
1975-1985 detached (115)
ceiling height 2.4 m
approximate area 62 m²



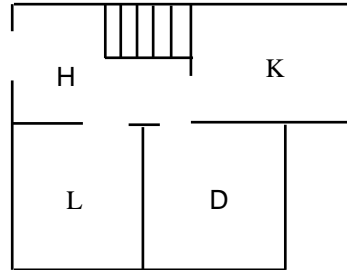
Post-1985 detached (118)
ceiling height 2.4 m
approximate area 62 m²



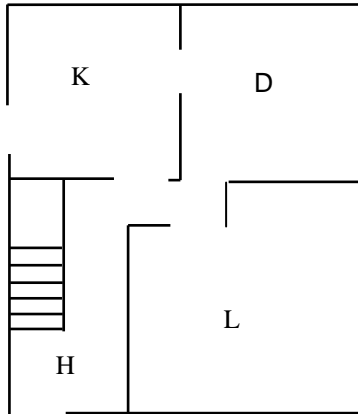
Pre-1919 semi-detached (121)
 ceiling height 2.3 m
 approximate area 37 m²



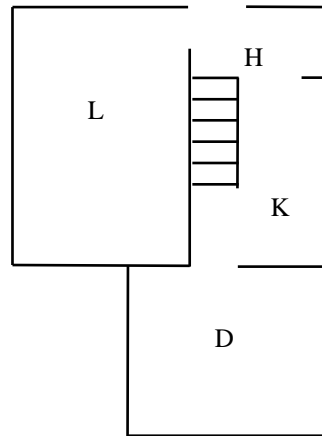
1919-1944 semi-detached (122, 123)
 ceiling height 2.4 m
 approximate area 51 m²



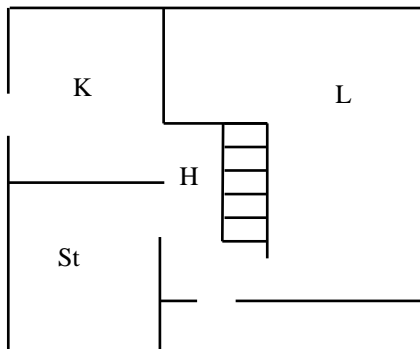
1965-1974 semi-detached (124)
 ceiling height 2.3 m
 approximate area 43 m²



1975-1985 semi-detached (125)
 ceiling height 2.4 m
 approximate area 35 m²



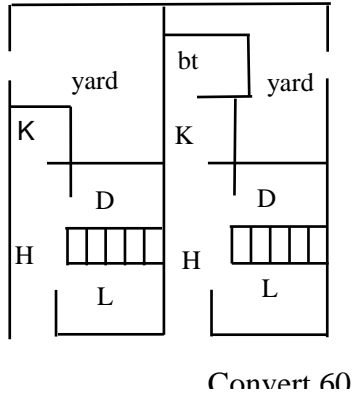
Post-1985 semi-detached (128)
 ceiling height 2.3 m
 approximate area 35 m²



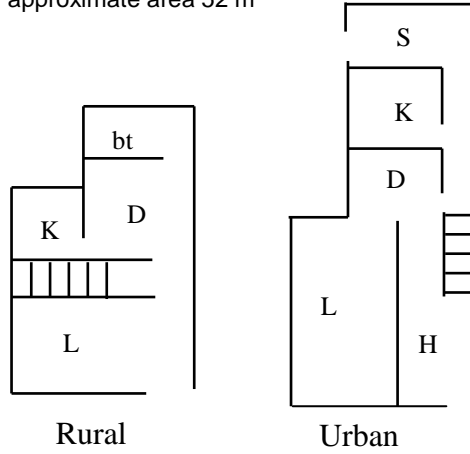
Key

- B bedroom
- bt bathroom/toilet
- Cl cloakroom
- D dining room
- DW drawing room
- G garage
- H hall
- K kitchen
- L lounge
- St study
- U utility room

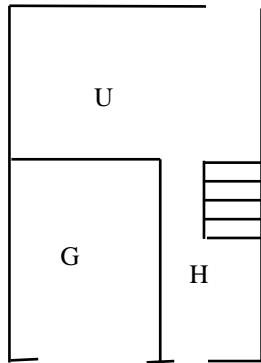
Pre-1919 terrace (131)
ceiling height 2.4 m
approximate area 39 m²



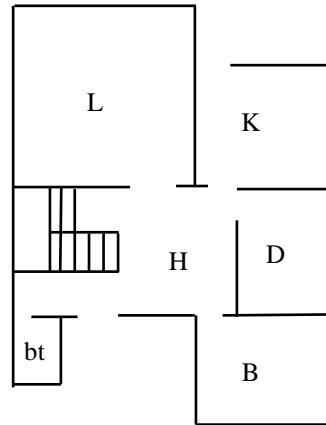
1919-1944 terrace (132)
ceiling height (rural) 2.1 m
ceiling height (urban) 2.4 m
approximate area 52 m



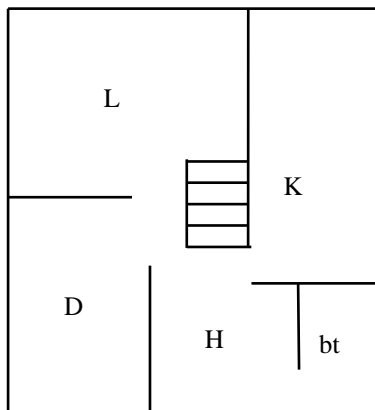
1945-1964 terrace (133)
(townhouse)
ceiling height 2.3 m
approximate area 35 m²



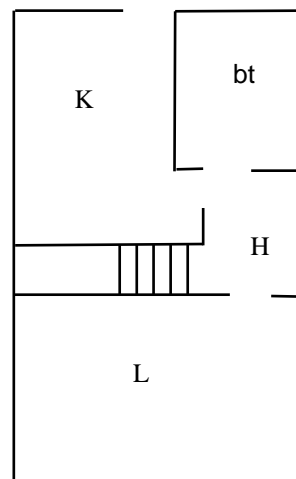
1965-1974 terrace (134)
ceiling height 2.3 m
approximate area 45 m²



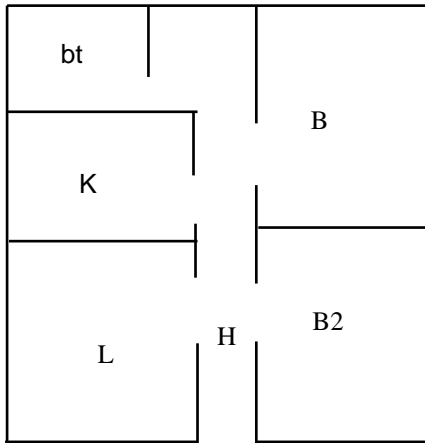
1975-1985 terrace (135)
ceiling height 2.4 m
approximate area 33 m²



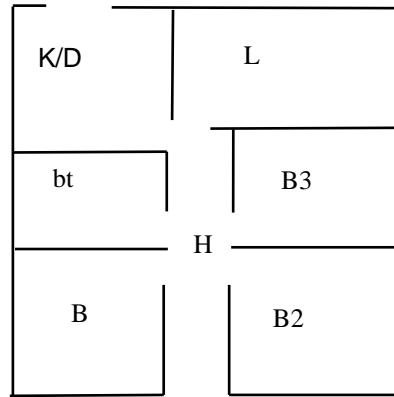
Post-1985 terrace (138)
ceiling height 2.4 m
approximate area 33 m²



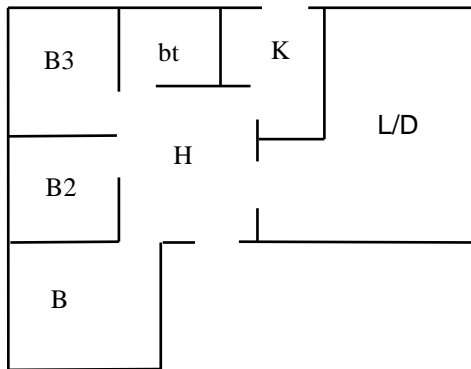
Pre-1919 bungalow or rural cottage (141)
 ceiling height 2.1 m
 approximate area 51 m²



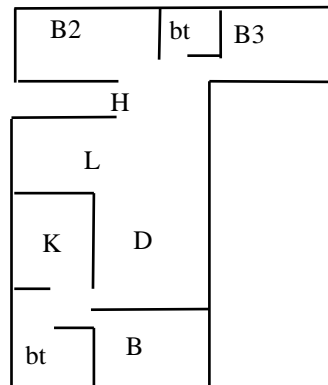
1919-1944 bungalow (142)
 ceiling height 2.5 m
 approximate area 92 m²



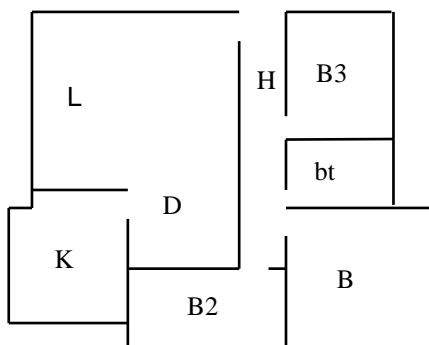
1945-1964 bungalow (143)
 ceiling height 2.4 m
 approximate area 89 m²



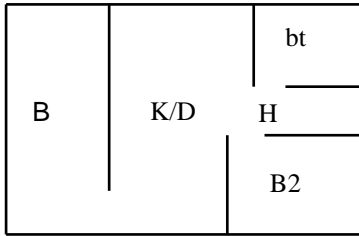
1965-1974 bungalow (144)
 ceiling height 2.4 m
 approximate area 125 m²



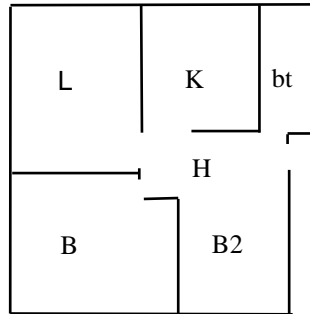
1975-1985 bungalow (145)
 ceiling height 2.4 m
 approximate area 79 m²



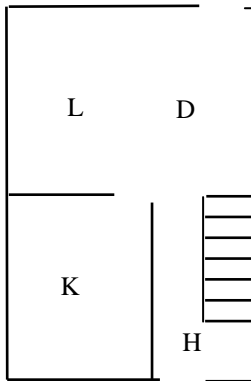
Pre-1919 flat (151)
 (tenement)
 ceiling height 2.8 m
 approximate area 40 m²



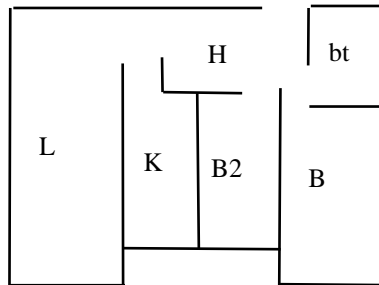
1919-1944 flat (152)
 ceiling height 2.4 m
 approximate area 82 m²



1945-1964 flat (153)
 (maisonette)
 ceiling height 2.2 m
 approximate area 35 m²



1965-1974 flat (154)
 ceiling height 2.2 m
 approximate area 72 m²



1975-1985 flat (155)
 ceiling height 2.2 m
 approximate area 34 m²

